



SPPrac.

Specialised Project Practice



iPPM™

SAP® Certified
Integration with SAP S/4HANA®

SAP® Certified
Powered by SAP NetWeaver®



Awards

Gold in SAP's Quality Awards
in the Business Transformation
Category for Africa (2016)

Silver in SAP's Quality Awards
in the Business Transformation
Category for Europe, the Middle East
and Africa (EMEA) (2016)

ITWeb
Business Intelligence
Excellence Award (2010)

Gold in SAP's
Quality Awards for the African
Market Unit (2010)

Silver in SAP's Quality Awards
in the New Business Transformation
Category for Europe, the Middle East
and Africa (EMEA) (2016)

www.spprac.com

(+27) 21 839 5519

info@spprac.com



Table of Contents

The Case for SAP PPM 01

iCMS Overview 02

Benefits Tracking Overview 03

iPPM Overview 04

How many active projects are you managing?



How many of them are aligned?



How many projects are on time?



How many are at risk of failing?



How many projects will make budget?



With the ever increasing scarcity of resources, both capital and human, and the mounting pressure on business to continually improve delivery, companies have begun to turn to project portfolio management (PPM) to ensure the optimum allocation of resources to projects to maximise returns.

Project Portfolio

Management aligns projects with corporate strategy, thereby enabling a company to prioritise their portfolio, thus allowing the effective allocation of resources to projects and therefore improving delivery.

Project Portfolio Management

is an important discipline, which has delivered positive impacts to organisations, providing senior management with reliable information to assist in the decision making process and enabling operational transparency thereby empowering management to respond effectively and efficiently to rapidly changing circumstances.

Integrated Project Portfolio Management (**iPPM**[®]) is a suite of best practice PPM process, organisational change management and technical enhancements based on the SAP Project Portfolio Management framework.

iPPM[®] provides customers with an award winning structured approach to understanding and adopting PPM within their environment using industry specific road maps and key technical enhancements. **iPPM**[®] will not only help diagnose and understand the challenges within your environment, it will define a clear road map, **underpinned by SAP PPM technology and our enhancements**, to improve your organisation's performance.



iPPM is the Solution!

iPPM[®] addresses the problems associated with multi project environments spanning across organisation's and provides a holistic integrated solution taking into account three key dimensions of process design, change management and best practice technology. **iPPM**[®] provides a transaction platform based on the SAP PPM solution all the while being fully integrated with SAP ERP, the end result is a fully transparent and integrated project portfolio management platform supported by aggregated dashboard views that can be used at an executive level to determine the appropriate projects and investment pattern to be followed by the company.

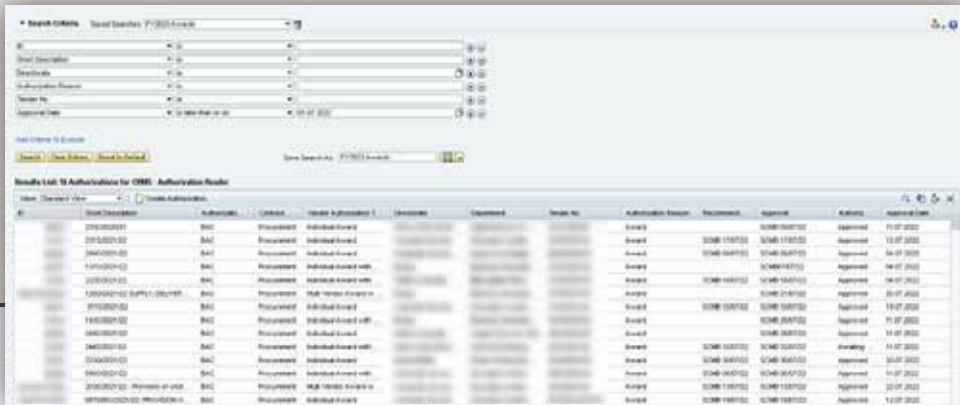
The Integrated Contract Management System (iCMS) functionality in iPPM® is a set of standard contract management practices, processes and supporting technology that enables our clients to plan, manage, and deliver their contracts through the contract management life cycle and improve their contract management capability

iCMS enables Organisations to:

Plan, Approve, Manage, and Track contracts enterprise wide, according to **organisational segregation** of duties and **management roles**

Display curated **authorised contracts** by **type** and **user authorisation and management role**. Plan, Track, and monitor **all changes**

Search an organisational contract register for contracts by **type**. Review **contract status**, allocate **actions** to **users**, leave **comments** linked to a specific contract, and more



Generate an **Anomalies List** as an **exception report and manage compliance**

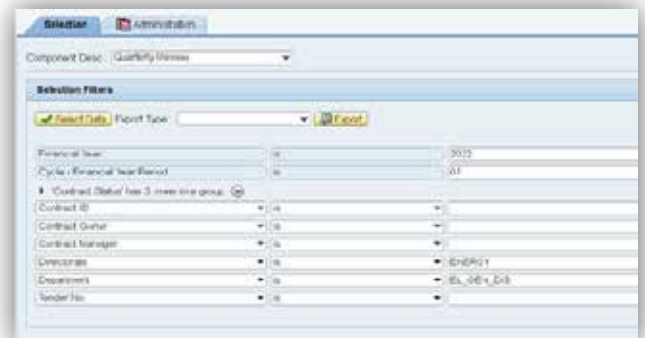
Highlight **potential issues** between **authorisations, contracts, SAP MM Agreements**, and other master data, and **correct** the anomalies

Conduct quarterly **contract performance peer reviews** on contracts

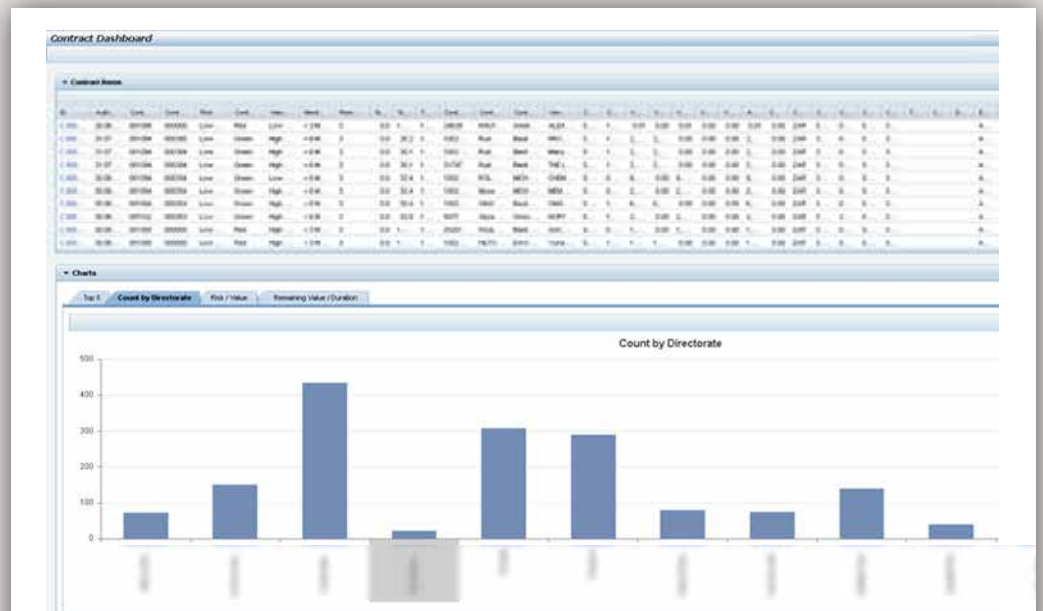
Provide monthly **status feedback** on **active contracts**

Terminate or **close-out** contracts **seamlessly**

Set **statuses, capture termination** or **close-out documents, initiate relevant procedures**, and **ensure compliance**

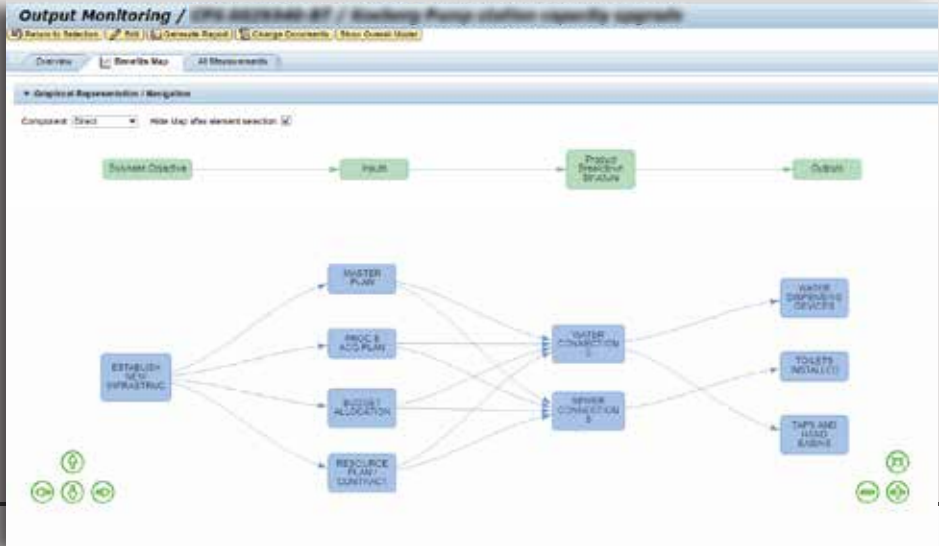


Configure a **customisable iCMS dashboard**. Drill down into the data through **powerful filter functionalities** and **export dashboards easily**



iPPM® BT is designed to support the establishment of an integrated enterprise-wide benefits tracking system that enables Monitoring and Evaluation of inputs, outputs, outcomes and impacts. iPPM® BT enables the evaluation of the efficient and effective use of funds to achieve organisations' strategic objectives.

BT enables organisations to:



Plan, track, and manage benefits

Deliver value and improve results

Graphically define and map benefits models linked to any portfolios, programmes and projects

Report on planned vs actual benefits achieved

Improve stakeholder buy-in

Set targets and track performance indicators

Test and prove your business case

Measurement Definition / Description		Measurement Data		Assumptions	Risks	Constraints		
Measurement Values								
Lock / Unlock Measurements								
Period	Interval	Plan Quantity	Forecast Quantity	Actual Quantity	Unit of Measure	FY Year	FY Period	
30.09.2019	2019.09	220	220	220	EA	2020	3	
31.12.2019	2019.12	220	220	220	EA	2020	6	
31.03.2020	2020.03	220	220	190	EA	2020	9	
30.06.2020	2020.06	220	230	230	EA	2020	12	

Define planned KPIs and actual KPIs to enable tracking and measuring their realisation beyond the life of the programmes or project

Direct \ Outputs \ WATER DISPENSING DEVICES \ Water Dispensing Devices						
Overview		KPI's / Measurement	Assumptions	Risks	Constraints	Related Elements
Measurement Definition						
Add Measurement		Delete Measurement				
Measurement Object Reference	External ID	Model Description	Measurement Object Item Key	Meas		
Current Element	WATER DISPENSING DEVICES	Water Dispensing Devices				
Current Element	WATER DISPENSING DEVICES	Water Dispensing Devices				
Current Element	WATER DISPENSING DEVICES	Water Dispensing Devices				
Current Element	WATER DISPENSING DEVICES	Water Dispensing Devices				

iPPM[®] can be applied to multiple portfolios such as New Product Development & Innovation, Capital Project portfolios and IT Portfolio Management to name but a few.

iPPM enables organisations to:

Increase alignment between **project planning** and **business strategy**

Balance your portfolio based on **risk, mission critical objectives,** and **investment type**

Focus resources on **projects with the greatest benefits**



Improve resource utilisation by **capturing, prioritising,** and **matching strategic projects to available supply of resources**

Readiness	Select	Initiative ID	Initiative Desc	Item ID	Item Desc	Active Phase	Fin Sta	Prop Fin Sta	DP Screened	Screen Override	Actuals to Date
Approved	<input checked="" type="checkbox"/>					Scoping	APPR	APPR			100
Screening override	<input checked="" type="checkbox"/>					Scoping	APPR	APPR			100
Warning	<input checked="" type="checkbox"/>					Conceptual Design	APPR	APPR	X		100



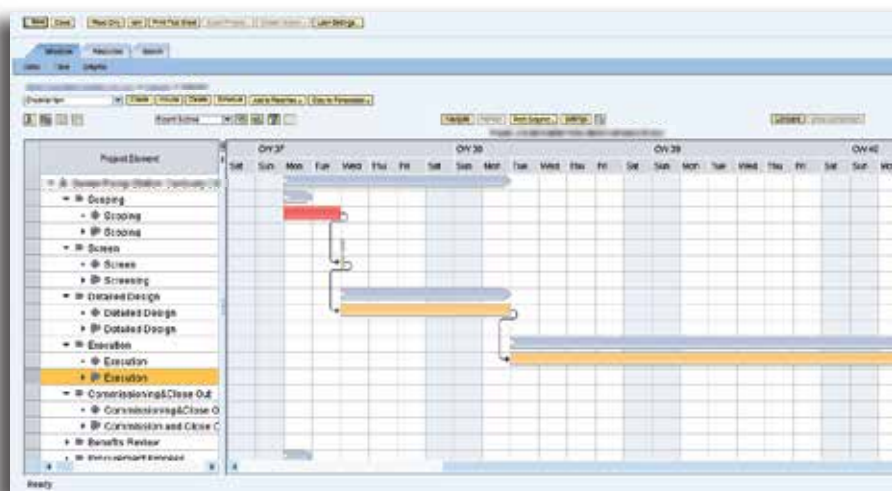
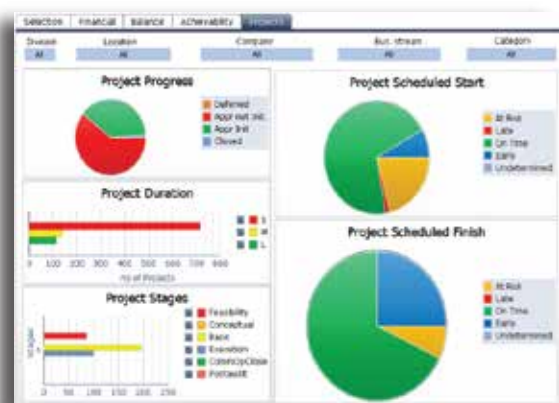
Gain clear **financial visibility** and **control of capital projects**

Streamline and enforce approvals for funding, resource, gate stage decisions, and ongoing monitoring

The screenshot displays the SAP CAPEX PLANNING interface. At the top, there are tabs for Selection, Capex Planning, Opex Planning, Operational Impact, Planning Summary, Draft Budget, Adjustment Budget, and Messages. Below the tabs, there are filters for 'From: 2014' and 'To: 2018', and buttons for 'Apply', 'Subtotals on/off', 'Insert new fund source', 'Copy Row Values', 'PS Financial Rollup', 'Copy Forecast to LP', and 'Copy financial view'. The main table has columns for Initiative ID, Initiative Desc, Item ID, Item Desc, WBS Element, Fund Source, Financial View, Proposed TPC, Approved TPC, Total Plan Cost, and monthly forecasts for Jul 2013, Aug 2013, and Sep 2013. The table lists multiple initiatives with their respective financial details and status indicators.

Increase visibility to **Identify project anomalies and risks**, and **make mid-course adjustments**

Develop common project methodologies across the enterprise



Reduce project overlaps and yearly carryover

The screenshot shows the SAP Portfolio Capital Portfolio interface. It features a top navigation bar with buttons for 'Switch Portfolio', 'Switch Hierarchy/Bucket', 'Portfolio Details', and 'Search'. Below this, there are tabs for 'All Initiatives', 'Active Initiatives', 'Active Proposals', 'Active Escalations', 'Inactive Initiatives', and 'Released Initiatives'. The main table lists initiatives with columns for ID, Name, Number of Items, Planned Start, Initiative Type, Decision Point Name, Schedule Status, Staffing Status, Budget Status, and Days Left Until Finish. The table provides a clear view of project schedules and potential overlaps.



SPPrac.
Specialised Project Practice



Specialised Project Practice (SPPrac) provides niche consulting and expertise in the Project, Programme and Portfolio Management arena. We are specialists in our field and provide our clients with best practice frameworks, toolsets and processes to enable the execution of their strategy through project and portfolio management. **We are a recognised SAP PPM Special Expertise Partner.**

We facilitate strategy enablement, bottom-line growth and efficiency through project, programme and portfolio management methods and have won a number of awards for this.

Our Services

SPPrac focuses on the business processes, tools and techniques relating to project, programme and portfolio management (PPM). We specifically help customers identify the key challenges they would like to address within their business by applying project portfolio management and determine the likely benefits they would achieve by the adoption of a PPM framework to suit the needs of their business. The key services we offer include:

-  **Project Portfolio Management Services and Consulting** around project portfolio structuring, frameworks and lifecycles to enable maximum returns from your portfolio of projects.
-  **Project Management Consulting** on the structuring, execution and management of Projects as well as compliance with industry best practice.
-  **Change Consulting/Maturity Assessments** as part of the SPPrac standard client engagement process. We provide various mechanisms to enable an understanding of the organisation's maturity and ability to handle change and progress, and develop plans to manage this.
-  **Business Process Design** which includes the identification and design of best practice business processes, leveraging our knowledge of the PPM discipline and experience in the major ERP and PPM software packages.
-  **Solution Architecture and Implementation** which includes business requirements identification, solution architecture, design and implementation to enable PPM business processes, by leveraging our experience in the major ERP and PPM software packages.

Our Team

SPPrac comprises a team of experienced professionals who have earned their stripes in the following fields:

- Project Portfolio management strategy development, structuring and design
- Enterprise wide Project Portfolio management implementation
- Management Consulting and Facilitation
- Organisational Change and Design
- Business Process Design
- Project Management Office implementation
- Large Scale Projects and Programme Management
- ERP / PPM Integration Management and Design

We facilitate strategy enablement, bottom-line growth and efficiency through project, programme and portfolio management methods and have won a number of awards for this.

We are able to provide consulting on various technologies. Please contact us for more detail on the profiles of our key staff.

Offices

Cape Town | Johannesburg

Contact

E: info@spprac.com
 M: +27 72 484 8539
 F: +27 866 121 121
 W: www.spprac.com



SPPrac.

Specialised Project Practice



Awards

ITWeb
Business Intelligence
Excellence Award
(2010)

Gold in SAP's Quality
Awards for the
African
Market Unit

Silver in SAP's Quality Awards
Award in the new business
application category for Europe,
the Middle East and Africa (EMEA)

SAP[®] Certified
Integration with SAP S/4HANA[®]



SAP[®] Certified
Powered by SAP NetWeaver[®]

www.spprac.com

(+27) 21 839 5519

info@spprac.com